

**ILLUSTRATED PARTS LIST SYSTEM 9065-2001 FORD SUPER DUTY  
F250 - F550 7.3 POWER STROKE DIESEL**

ASSY.	ITEM	UNIT	QTY	PART#	DESCRIPTION
<b>1.0</b>					<b>Main bracket assembly</b>
	1.1	ea	1	11113	VR7000 main bracket
	1.2	ea	1	26075	Tensioner
	1.3	ea	1	14129	Idler spacer
	1.4	ea	1	15048	7/16" flat washer
	1.5	ea	1	15419	12mm x 80mm HHCS
	1.6	ea	2		C/W item 1.2
	1.7	ea	1		C/W item 1.2
	1.8	ea	1	13007	Idler, back
	1.9	ea	1	15161	1/2" x 1 1/4" NC HHCS FL
	1.10	ea	1	14051	Idler bolt spacer
	1.11	ea	1	13008	Idler, 6 rib
	1.12	ea	3	15145	10mm x 20mm SHCS
	1.13	ea	1	18146	VR7000 crankshaft pulley
	1.14	ea	1	16231	VR7000 belt
<b>2.0</b>				<b>1245</b>	<b>Compressor assembly</b>
	2.1	ea	1	1202	VR7000 compressor
	2.2	ea	1	92174	Inlet control valve
	2.3	ea	1	35363	Temperature probe
	2.4	ea	1	50112	45 DEG street elbow - 1/8" NPT
	2.5	ea	1	35288	Pressure sensor
	2.6	ea	1	15221	1/4" NC nut
	2.7	ea	1	15374	1/4" NC x 3" threaded rod
	2.8	ea	1	15038	1/4" SAE flat washer
	2.9	ea	1	15029	1/4" NC Nylok nut
	2.10	ea	1	36045	Filter cover
	2.11	ea	1	36037	Paper filter element
	2.12	ea	1	49045	Hollow hex plug #8 SAE
	2.13	ea	1	50081	90 DEG elbow 1/8" NPT
	2.14	ea	1	50085	45 DEG elbow - 1/8" NPT x 1/4" SAE
	2.15	ea	2	22097	Cable clamp, 1/4"
	2.16	ea	1	49032	1" Male BSPP to 3/4" male 37 DEG tube
	2.17	ea	1	58004	O-ring 3 1/8" ID x 1/8" wide, Viton
	2.18	ea	1	58002	O-ring 2 3/8" ID x 3/32" wide, Viton
	2.19	ea	1	92104	Filter blank plate
	2.20	ea	1	58045	O-ring 3/4" ID x 3/32" wide, Viton
	2.21	ea	1	92103	Filter blank plate fitting
	2.22	ea	1	50074	90 DEG elbow, 1/2" tube - 1/2" NPT
	2.23	ea	1	2035	Clutch complete 6 groove

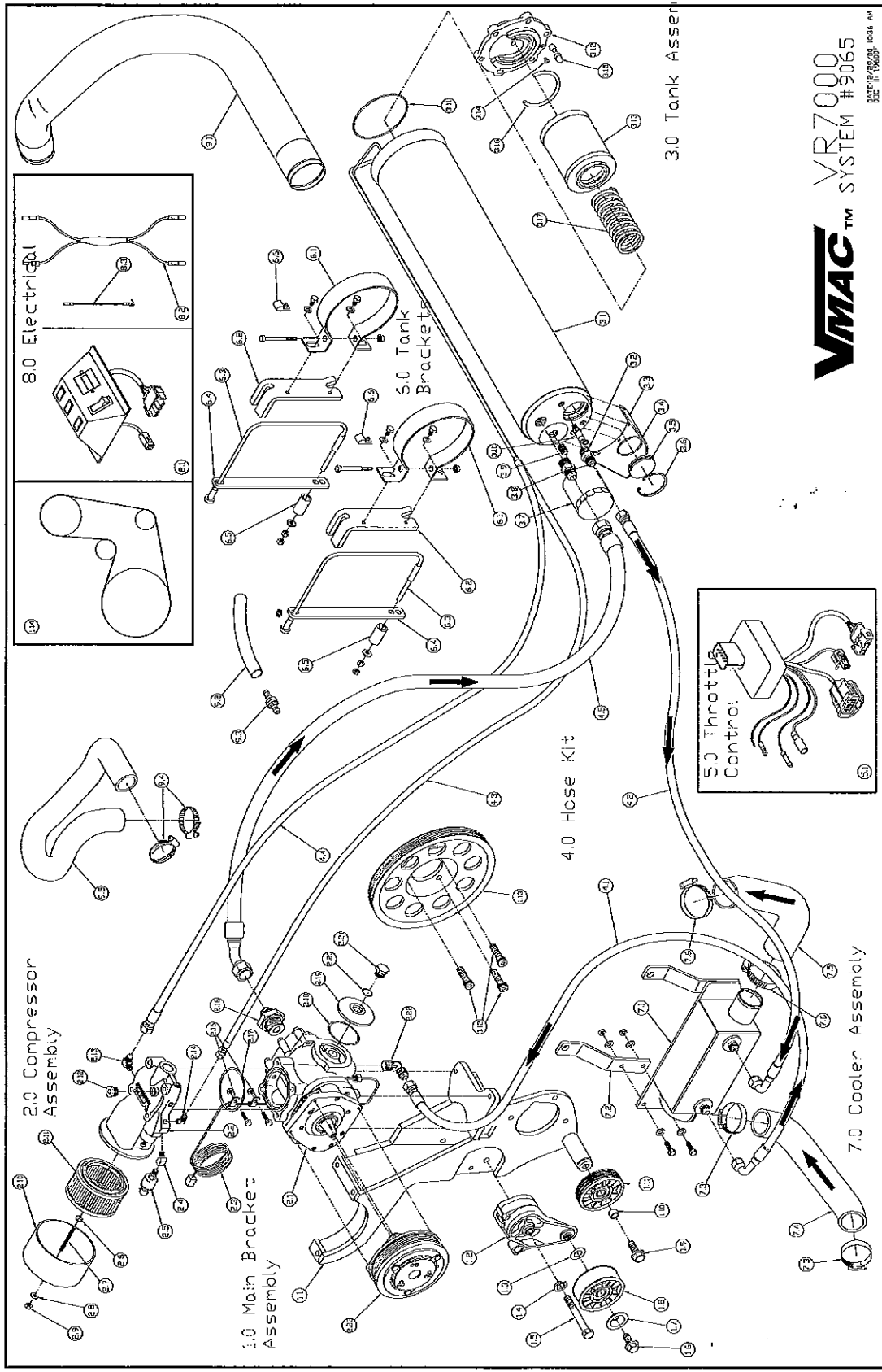
**ILLUSTRATED PARTS LIST SYSTEM 9065-2001 FORD SUPER DUTY  
F250 - F550 7.3 POWER STROKE DIESEL**

ASSY.	ITEM	UNIT	QTY	PART#	DESCRIPTION
<b>3.0</b>				<b>3044</b>	<b>Tank Assembly</b>
	3.1	ea	1	92199	Main tank body
	3.2	ea	1	50089	Brass connector 3/8" NPT - 1/2" SAE
	3.3	ea	1	12262	Guard plate
	3.4	ea	1	58008	O-ring 1 15/16" ID x 3/32" wide, Viton
	3.5	ea	1	32033	Sight glass window
	3.6	ea	1	15385	Retaining ring
	3.7	ea	1	92039	VR7000 Oil Filter
	3.8	ea	1	49033	Steel connector 3/4" NPT x 3/4" JIC 37 deg
	3.9	ea	1	49035	3/4" -16 Threaded Nipple
	3.10	ea	1	36054	200Psi Relief Valve
	3.11	ea	1	58066	O-ring, 4 3/4" ID x 1/8" wide, Viton
	3.12	ea	1	32190	Discharge cap
	3.13	ea	1	36036	Coalescing filter element
	3.14	in	2	15077	10-32 x 3/8" Button Head SHCS
	3.15	ea	1	48241	Scavenge screen assembly
	3.16	ea	1	36064	Tank rear cap seal
	3.17	ea	1	58068	Compression spring
<b>4.0</b>				<b>4065</b>	<b>Hose Kit</b>
	4.1	ea	1	17417	1/2" AQP hose / 41.5" long c/w 90 DEG elbow
	4.2	ea	1	17385	1/2" AQP hose / 86.0" long c/w 90 DEG elbow
	4.3	ea	1	17473	1/4" HT hose / 99.0" long
	4.4	ea	1	17472	5/16" HT hose / 92.0" long
	4.5	ea	1	17301	3/4" AQP hose / 57.0" long c/w 45 DEG elbow
<b>5.0</b>					<b>Throttle Control Assembly</b>
	5.1	ea	1	5074	VR7000 throttle control
<b>6.0</b>					<b>Tank Brackets</b>
	6.1	ea	2	22105	Tank mounting bracket (C-clamp)
	6.2	ea	2	12236	Tank strap mount
	6.3	ea	2	22120	Tank cable strap
	6.4	ea	2	22113	Tank strap flat bar
	6.5	ea	2	14162	Cable spacer
	6.6	ea	2	22133	Tube Clamp

**ILLUSTRATED PARTS LIST SYSTEM 9065-2001 FORD SUPER DUTY  
F250 - F550 7.3 POWER STROKE DIESEL**

ASSY.	ITEM	UNIT	QTY	PART#	DESCRIPTION
<b>7.0</b>				<b>48208</b>	<b>Cooler Assembly</b>
	7.1	ea	1	92191	VR7000 Cooler
	7.2	ea	1	12253	Cooler leg
	7.3	ea	4	22026	Hose clamp HS28
	7.4	ea	1	17418	Radiator hose
	7.5	ea	1	17420	Radiator hose
	7.6	ea	1	22027	Hose Clamp HS32
<b>8.0</b>					<b>Electrical Assembly</b>
	8.1	ea	1	35388	VR7000 control box
	8.2	ea	1	35498	Drive disable circuit
	8.3	ea	1	35509	Standard transmission park brake jumper
<b>9.0</b>					<b>Misc.</b>
	9.1	ea	1	17246	Intercooler tube
	9.2	in	11	17030	3/8" rubber hose
	9.3	ea	1	50005	3/8" hose splicer
	9.4	ea	2	22026	Hose clamp HS28
	9.5	ea	1	17252	Upper radiator hose

*IS THIS SUPPOSED TO BE THE  
SAME NUMBER AS THE 9064 KIT.*



8.0 Electrical

2.0 Compressor Assembly

1.0 Main Bracket Assembly

6.0 Tank Brackets

4.0 Hose Kit

3.0 Tank Assembly

5.0 Throttle Control

7.0 Cooler Assembly

**VMAC**™ VR7000 SYSTEM #9065

DATE: 05/05/08 10:36 AM  
 DOC: 11706508