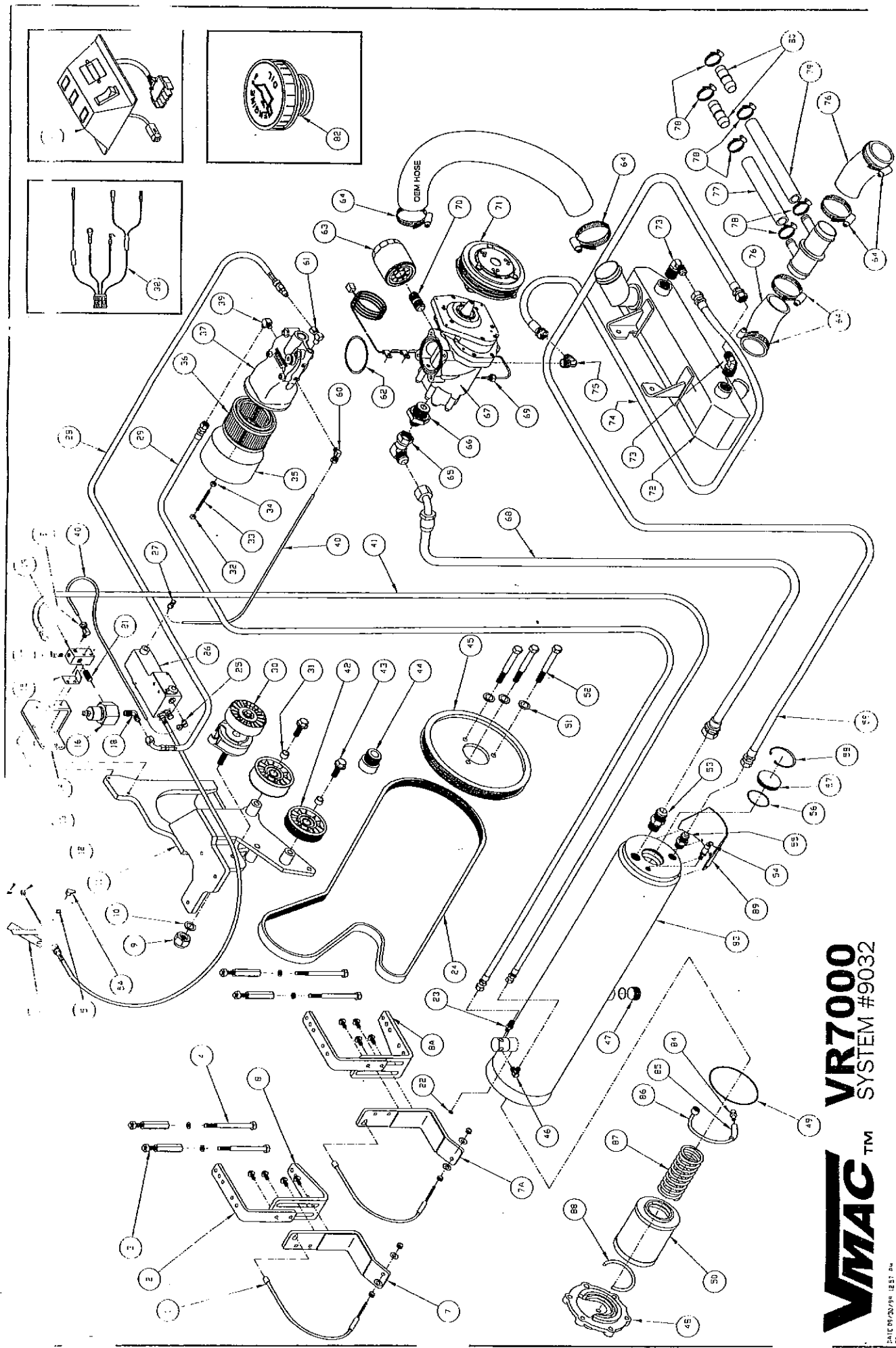


ILLUSTRATED PARTS LIST FOR SYSTEM 9032 - 1999 FORD F250-F550 TRITON V10

ITEM	UNIT	QTY	PART#	DESCRIPTION
1	ea	2	22095	TANK CABLE
2	ea	2	22094	TOP FRAME CLAMP
3	in	4	15452	COUPLING FASTENER
4	ea	4	15002	3/8 X 5 HHCS
5	ea	1	15437	SPACING WASHER
5A	ea	1	58044	CLIP
6	ea	1	12186	THROTTLE LEVER
7	ea	1	22092	TANK CRADLE
7A	ea	1	22102	TANK CRADLE
8	ea	1	22093	BOTTOM FRAME CLAMP
8A	ea	1	22103	BOTTOM FRAME CLAMP
9	ea	1	15138	10mm x 1.5 NYLOCK
10	ea	1	14024	SPACER
11	ea	1	11124	MAIN BRACKET
12	ea	1	32070	THROTTLE CONTROLLER CABLE NIPPLE
13	ea	1	15405	8-32 x 1/4 SHCS
14	ea	1	12205	REGULATOR BRACKET
15	ea	1	36053	SILENCING REED
16	ea	1	36046	REGULATOR VALVE
17	ea	1	50064	1/4 TUBE x 1/8 PIPE, 90° ELBOW
18	ea	1	50093	1/4 NPT TO 5/16 TUBE SAE, 90° ELBOW
19	ea	1	36050	REG/PTX MOUNT BLOCK (BOTTOM VENTED)
20	ea	1	50020	1/4 TUBE x 1/8 NPT, SWIVEL FEMALE ELBOW
21	ea	1	43028	1/4 CLOSE NIPPLE
22	ea	1	36055	TANK SCAVENGE SCREEN
23	ea	1	50082	1/8 NPT TO 5/16 TUBE SAE 45°, CONNECTOR
24	ea	1	16231	BELT
25	ea	1	92147	MODIFIED 1/4 TUBE TO 1/8 NPT ORIFICE
26	ea	1	5042	THROTTLE CONTROL
27	ea	1	50020	1/4 TUBE TO 1/8 NPT, CONNECTOR ELBOW
28	ea	1	17297	5/16 HT x 13.5" c/w 45° HOSE END
29	ea	1	17299	5/16 HT x 79.0"
30	ea	1	33015	BELT TENSIONER
31	ea	2	14051	IDLER BOLT SPACER
32	ea	1	15029	1/4 NC NYLOCK NUT
33	ea	1	15374	1/4 NC THREADED ROD x 3" LONG
34	ea	1	15221	1/4 NC HEX NUT
35	ea	1	36045	FILTER COVER
36	ea	1	36037	AIR FILTER
37	ea	1	92148	INLET CONTROL VALVE
38	ea	1	35390	INTERFACE CABLE
39	ea	1	92091	1/8 NPT SCAVENGE ORIFICE 90° ELBOW
40	in	22/18	17334	RED POLY TUBE
41	ea	1	17294	1/4 HT x 91.5"
42	ea	1	13008	IDLER SERP. 6 RIB GROOVE
43	ea	2	15161	1/2 x 1-1/4 NC, G8, HHCS

ILLUSTRATED PARTS LIST FOR SYSTEM 9032 - 1999 FORD F250-F550 TRITON V10

ITEM	UNIT	QTY	PART#	DESCRIPTION
44	ea	1	34034	FAN SPACER
45	ea	1	18126	CRANK PULLEY
46	ea	1	50064	¼ TUBE x 1/8 PIPE, 90° ELBOW
47	ea	1	49045	HOLLOW HEX PLUG SAE #8 O-RING PORT
48	ea	1	32156	TANK DISCHARGE CAP
49	ea	1	58007	O-RING 4-3/4 OD x 1/8 WIDE, VITON
50	ea	1	36036	COALESCING SEPARATOR ELEMENT
51	ea	3	15044	3/8 SAE WASHER
52	ea	3	15108	10mm x 60 HHCS, G10.9
53	ea	1	49033	¾ JIC TO ¼ MALE NPT
54	ea	1	36054	200 PSI SAFETY VALVE
55	ea	1	50060	½ SAE x ½ NPT CONNECTOR
56	ea	1	58008	O-RING 2-3/8 OD x 3/32 WIDE, VITON
57	ea	1	32033	SIGHT GLASS WINDOW
58	ea	1	15385	RETAINING RING
59	ea	1	17302	½ HT x 74.5" <i>ADD 2 3/8" to length 15/12/99 &</i>
60	ea	1	50020	¼ TUBE x 1/8 NPT, SWIVEL FEMALE
61	ea	1	50103	MALE 1/8 PIPE - FEMALE ¼ JIC 90° ELBOW
62	ea	1	58004	O-RING 3-1/8 ID x 1/8 WIDE, VITON
63	ea	1	92039	OIL FILTER
64	ea	6	22027	HOSE CLAMP
65	ea	1	49043	¾ JIC x ¾ JIC, 90° SWIVEL
66	ea	1	49032	1" MALE BSPP TO ¼ MALE 37° TUBE
67	ea	1	1221	AIR COMPRESSOR
68	ea	1	17293	¾ AQP x 48.0", c/w 45° HOSE END
69	ea	1	35363	TEMPERATURE PROBE
70	ea	1	49035	3/4-16 STRAIGHT THREAD NIPPLE
71	ea	1	2035	CLUTCH
72	ea	1	92077	COOLER
73	ea	2	50071	¼ TUBE x ¼ NPT, 90° ELBOW
74	ea	1	17331	½ HT x 61.5"
75	ea	1	50074	¼ TUBE x ¼ NPT, 90° ELBOW
76	ea	2	17185	RAD DIVERter HOSE
77	in	7.5	17177	¾ HEATER HOSE
78	ea	6	22029	HOSE CLAMP
79	in	9	17177	¾ HEATER HOSE
80	ea	2	53019	¾ MALE BARB x ¾ MALE BARB STRAIGHT
81	ea	1	35388	VR7000 CONTROL BOX
82	ea	1	53007	MODIFIED OIL CAP
83	ea	1	3041	VR7000 TANK
84	ea	1	48174	SCAVENGE SCREEN BARB ASSEMBLY
85	in	2	17090	½" SILICONE TUBE
86	ea	1	48174	SCAVENGE TUBE /W NUT ASSEMBLY
87	ea	1	58068	COMPRESSION SPRING
88	ea	1	36064	TANK REAR CAP SEAL
89	ea	1	12202	TANK GUARD



VMAC™
VR7000
 SYSTEM #9032