

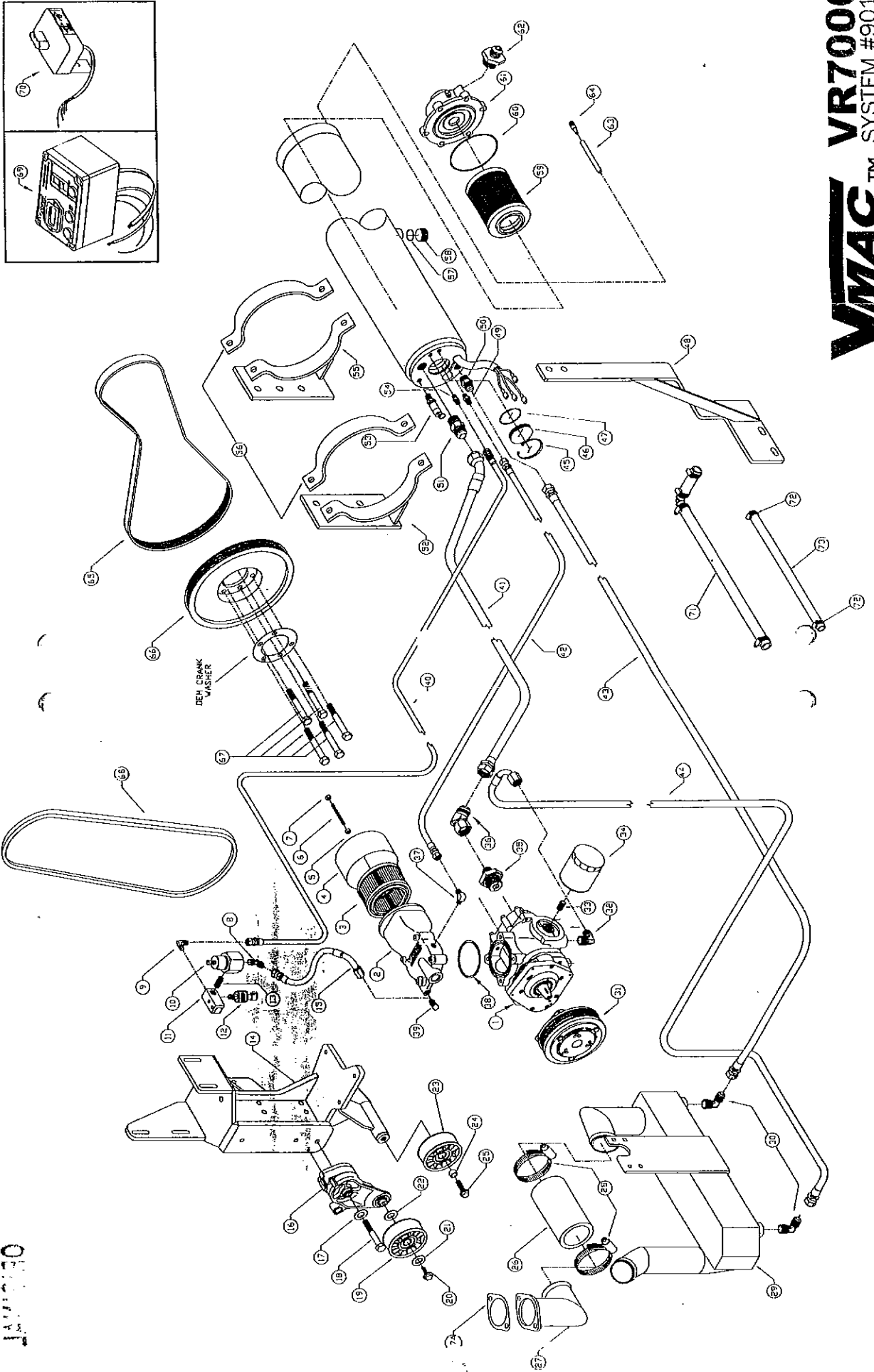
9018

ITEM	UNIT	QTY	PART #	DESCRIPTION
1	EA	1	1212	SCREW COMPRESSOR
2	EA	1	92108	INLET CONTROL VALVE
3	EA	1	36037	PAPER FILTER ELEMENT
4	EA	1	36045	FILTER COVER
5	EA	1	15221	1/4 NC NUT
6	EA	1	15374	1/4 NC X 3" THREADED ROD
7	EA	1	15019	1/4 NC NYLOCK NUT
8	EA	1	50093	1/4 NPT TO 5/16 TUBE SAE 90 DEGREE ELBOW
9	EA	1	50064	1/4 TUBE X 1/8 PAP 90 DEGREE ELBOW
10	EA	1	36046	REGULATOR VALVE
11	EA	1	36048	REG. PTX MOUNT BLOCK
12	EA	1	35288	PRESSURE TRANSDUCER SST 150
13	EA	1	50098	1/4 NPT X 1 1/2 NIPPLE
14	EA	1	11118	INTERNATIONAL M11 BRACKET
15	EA	1	17223	5/16 HOSE
16	EA	1	26075	DAYCO TENSIONER (89223) WITHOUT IDLER
17	EA	1	15048	7/16 WASHER SAE
18	EA	1	15419	12 X 80 HHCS 10.9
19	EA	1	13007	IDLER SERPENTINE 6 RIB BACK
20	EA	1	OEM	8MM X 18 BOLT (SUPPLIED W/TENSIONER)
21	EA	1	OEM	FLAT WASHER (SUPPLIED W/TENSIONER)
22	EA	1	14129	IDLER SPACER
23	EA	1	13007	IDLER SERPENTINE 6 RIB BACK
24	EA	1	14051	IDLER BOLT SPACE
25	EA	1	15043	1/2 X 1/4 IDLER BOLT
26	EA	55	17219	2 1/2 ID RAD HOSE (3" OD)
27	EA	1	31011	FLANGED 90 DEGREE ELBOW
28	EA	2	22036	HOSE CLAMP HS44
29	EA	1	92128	COOLER
30	EA	2	50071	90 DEGREE ELBOW 1/2 TUBE TO 3/4 NPT
31	EA	1	2035	CLUTCH ASSEMBLY 6 GROOVE
32	EA	1	50074	1/2 NPT 1/2 SAE 90 DEGREE ELBOW
33	EA	1	49035	3/4 - 16 STRAIGHT THREAD NIPPLE
34	EA	1	94039	OIL FILTER SHORT
35	EA	1	49032	CONNECTOR 1" MALE BSPP TO 3/4 MALE 37 TUBE
36	EA	1	49036	3/4 JIL SWIVEL NUT 45 DEGREE ELBOW
37	EA	1	92091	1/8 NPT SCAVENGE ORIFICE 90 DEGREE ELBOW
38	EA	1	58004	VITON 3/18 ID X 1/8 WIDE 'O' RING

9018

ITEM	UNIT	QTY	PART #	DESCRIPTION
39	EA	1	50081	1/8 NPT X 5/16 SAE TUBE 90 DEGREE ELBOW
40	EA	1	17228	1/4" HOSE A 700 653
41	EA	1	17229	3/4" HOSE 136 177 2142
42	EA	1	17221	5/16" HOSE A 700 157
43	EA	1	17227	1/2" HOSE 154" 1752166
44	EA	1	17222	1/2" HOSE 43 1752045
45	EA	1	15385	RETAINING RING
46	EA	1	32033	SIGHTGLASS WINDOW
47	EA	1	58008	O RING 1 15/16 ID X 3/32 WIDE VITON
48	EA	1	12175	POWER STEERING BRACKET
49	EA	1	50083	BRASS REDUCING COUPLING 45 SAE 5/16 NPT 1/4 NPT
50	EA	1	50060	1/2 HT X 1/2 NPT MALE
51	EA	1	49033	STEEL CONNECTOR 3/4"NPT X 3/4" JIC 37
52	EA	1	12173	TANK MOUNT FRONT
53	EA	1	36040	RELIEF 200 PSI
54	EA	1	50062	BRASS 45 SAE COUPLING 1/4 NPT 1/4 SAE
55	EA	1	12174	TANK MOUNT REAR
56	EA	2	22069	OVERSTRAP
57	EA	1	58028	O RING 15/16" ID X 3/32 WIDE
58	EA	1	32066	PLUG
59	EA	1	36044	COALESCING ELEMENT WITH PULLER NUT
60	EA	1	58007	O RING 4 1/2" ID X 1/8 WIDE
61	EA	1	36041	MINIMUM PRESSURE VALVE
62	EA	1	32082	MODIFIED 1" BSPP FITTING
63	EA	1	17134	SCAVANGE HOSE
64	EA	1	48105	SCAVANGE SCREEN FILTER
65	EA	1	16325	6 RIB SERPENTINE BELT
66	EA	1	18133	PULLEY
67	EA	5	15429	14 -15 X 80 MM HHCS
68	EA	1	16354	V-BELT
69	EA	1	35330	CONTROL BOX
70	EA	1	5016	THROTTLE BOX

DECAT



VMAC™ VR7000 SYSTEM #9018

DATE: 07/02 1:18 PM
REV: 1.000000