

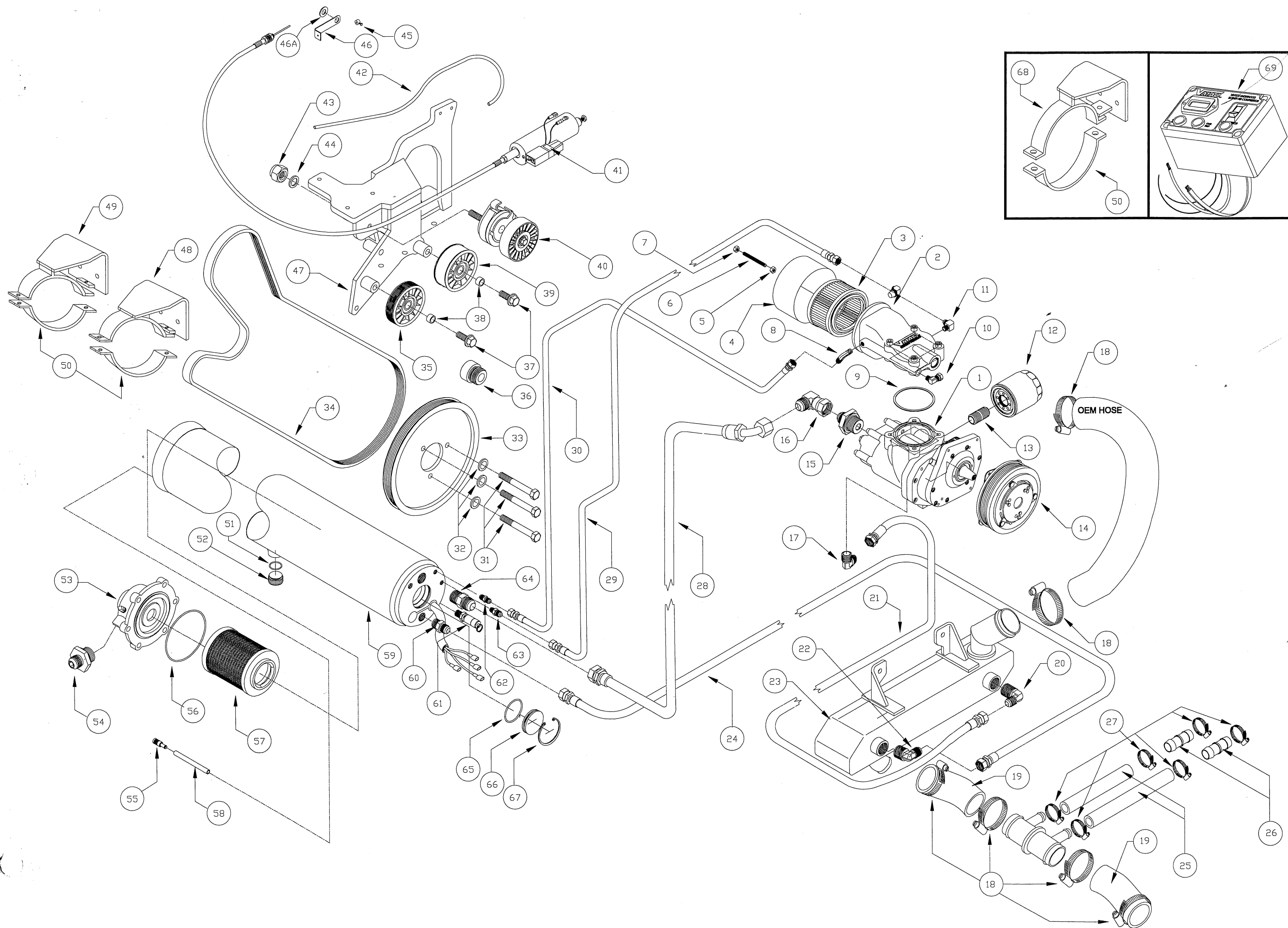
9016

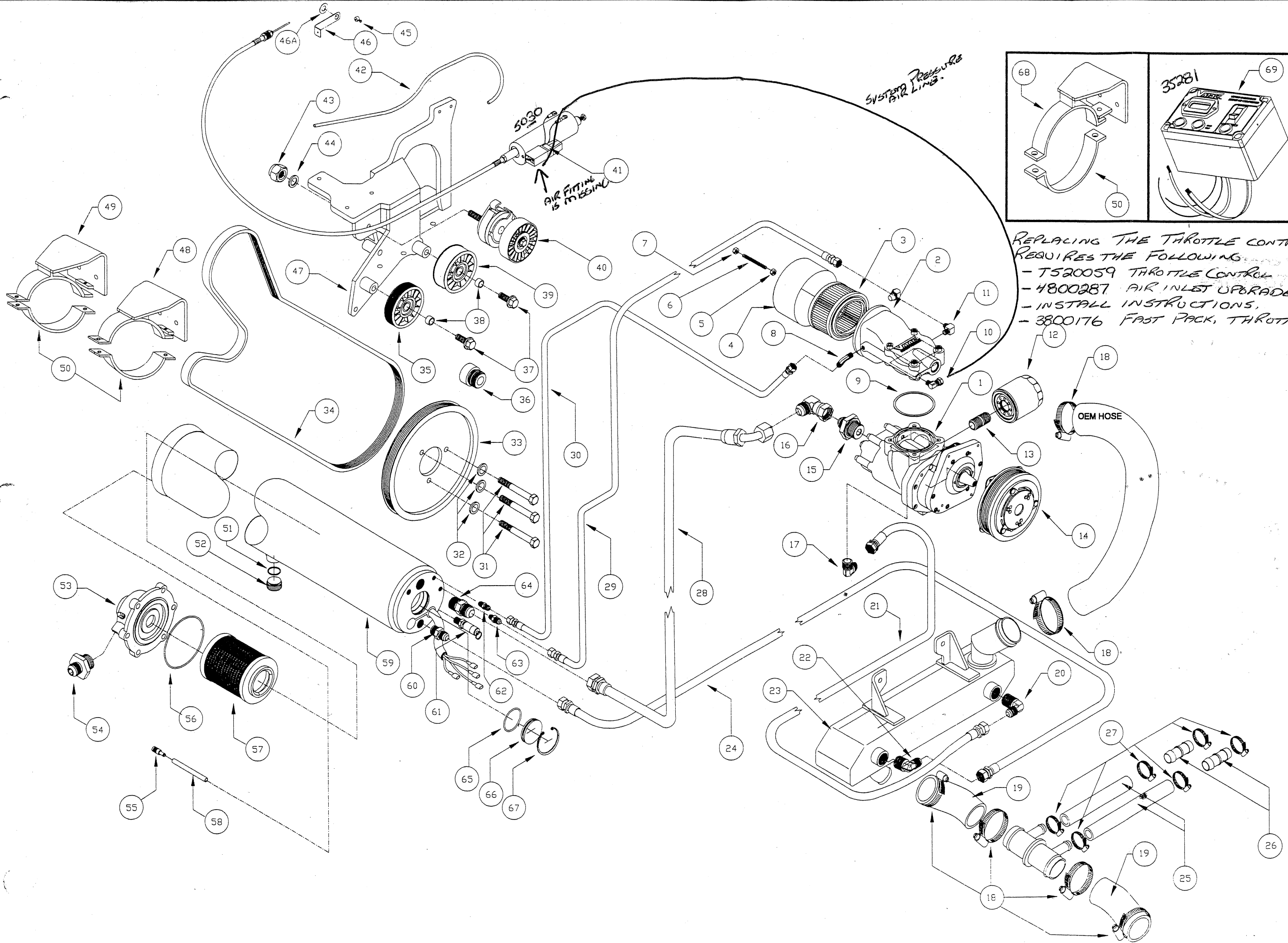
ILLUSTRATED PARTS LIST FOR SYSTEM 9016 - 1999 FORD F250-F550 TRITON V10

ITEM	UNIT	QTY	PART #	DESCRIPTION
1	EA	1	1206	VR7000 COMPRESSOR
2	EA	1	92088	INLET CONTROL VALVE ASSEMBLY #2
3	EA	1	36037	PAPER FILTER ELEMENT
4	EA	1	36045	FILTER COVER
5	EA	1	15221	¼" NC NUT
6	EA	1	15374	¼" NC THREADED ROD x 3" LONG
7	EA	1	15029	¼" NC NYLOCK NUT
8	EA	1	50064	¼" TUBE x 1/8" PIPE 90° ELBOW
9	EA	1	58004	VITON O RING 3 1/8" ID x 1/8" WIDE
10	EA	1	50020	1/8" NPT ¼" POLY TUBE 90° ELBOW
11	EA	1	92091	1/8" NPT SCAVENGE ORIFICE 90° ELBOW
12	EA	1	92039	OIL FILTER (SHORT)
13	EA	1	49035	¾" /16 STRAIGHT THREAD NIPPLE
14	EA	1	2035	CLUTCH 6 GROOVE
15	EA	1	49032	1" MALE TO ¾" 37° REDUCER
16	EA	2	49003	¾" 90° SWIVEL
17	EA	1	50074	½" NPT ½" SAE 90° ELBOW
18	EA	6	22027	HOSE CLAMPS HS32
19	EA	2	17185	COOLANT HOSE
20	EA	1	50071	¾" NPT ½" SAE 90° ELBOW
21	EA	1	17169	½" x 60½" LONG HT OIL RETURN HOSE
22	EA	1	50071	¾" NPT ½" SAE 90° ELBOW
23	EA	1	92077	COOLER ASSEMBLY
24	EA	1	17167	½" x 75½" LONG HT OIL RETURN HOSE
25	EA	2	17177	¾" HEATER HOSE (7½" LONG & 9" LONG)
26	EA	1	53019	¾" MALE BARB, STRAIGHT HOSE CONNECTOR
27	EA	1	22029	HOSE CLAMPS x 6 HS10
28	EA	1	17166	¾" x 53" LONG MAIN HT AIR HOSE
29	EA	1	17168	5/16" x 62" LONG SCAVENGE HOSE
30	EA	1	17165	¼" x 63" PRESSURE CONTROL LINE
31	EA	3	15108	10 x 60 mm HHCS & 10.9 BOLTS
32	EA	3	15044	3/8" ALLOY PL FLAT WASHERS
33	EA	1	18126	CRANK PULLEY VR 99 FORD V10
34	EA	1	16231	6 RIB SERPENTINE BELT
35	EA	1	13008	IDLER 6 RIB
36	EA	1	34034	FAN SPACER V10 FORD

ILLUSTRATED PARTS LIST FOR SYSTEM 9016 - 1999 FORD F250-F550 TRITON V10

ITEM	UNIT	QTY	PART #	DESCRIPTION
37	EA	2	15161	½ x 1¼ NC G8 FLANGELOCK BOLTS
38	EA	2	14051	IDLER BOLT SPACER
39	EA	1	13007	IDLER GRIB BACK
40	EA	1	33015	BELT AUTO TENSIONER
41	EA	1	5030	THROTTLE SPEED CONTROLLER FORD V10
42	EA	1	17055	1/4 BRAKE POLY TUBE x 12"
43	EA	1	15138	10 x 1.5 mm NYLOCK NUT
44	EA	1	14024	SPACER
45	EA	1	32070	CABLE NIPPLE
45A	EA	1	15405	CABLE NIPPLE FASTNER BOLT
46	EA	1	12157	THROTTLE PULL BRACKET FORD V10
46A	EA	1	12157	SPACING WASHER
47	EA	1	11114	VR MOUNTING BRACKET FORD V10
48	EA	1	12156	TANK MOUNT BRACKET (FRONT)
49	EA	1	12155	TANK MOUNT BRACKET (REAR)
50	EA	2	22069	TANK MOUNT BRACKET OVERSTRAP
51	EA	3	58028	O RING 15/16 ID x 3/32 WIDE
52	EA	1	32066	PLUG
53	EA	1	36041	MINIMUM PRESSURE VALVE
54	EA	1	32082	MODIFIED 1" BSPP FITTING
55	EA	1	48105	SCAVENGE SCREEN FILTER
56	EA	1	58007	O RING 4 ½ ID x 1/8 WIDE
57	EA	1	36044	COALESCING ELEMENT WITH PULLER NUT
58	EA	1	17134	SCAVENGE HOSE
59	EA	1	3037	TANK ASSEMBLY
60	EA	1	50060	½" SAE x ½ NPT MALE FITTING (BRASS)
61	EA	1	36040	RELIEF VALVE 200 PSI
62	EA	1	50062	¼ SAE x ¼ NPT MALE FITTING (BRASS)
63	EA	1	50083	5/16 SAE x ¼ NPT REDUCER FITTING (BRASS)
64	EA	1	49033	¾ NPT x ¾ JIC MALE FITTING (STEEL)
65	EA	1	58008	VITON O RING 1 15/16 ID x 3/32 WIDE
66	EA	1	32033	SIGHT GLASS WINDOW
67	EA	1	15385	RETAINING RING
68	EA	1	12160	RIGHT REAR TANK MOUNT BRACKET
69	EA	1	35281	ELECTRICAL CONTROL BOX FORD V10





REPLACING THE THROTTLE CONTROL PART # 5030
REQUIRES THE FOLLOWING:

- 7520059 THROTTLE CONTROL
- 4800287 AIR INLET UPGRADE
- INSTALL INSTRUCTIONS.
- 3800176 FAST PACK, THROTTLE.