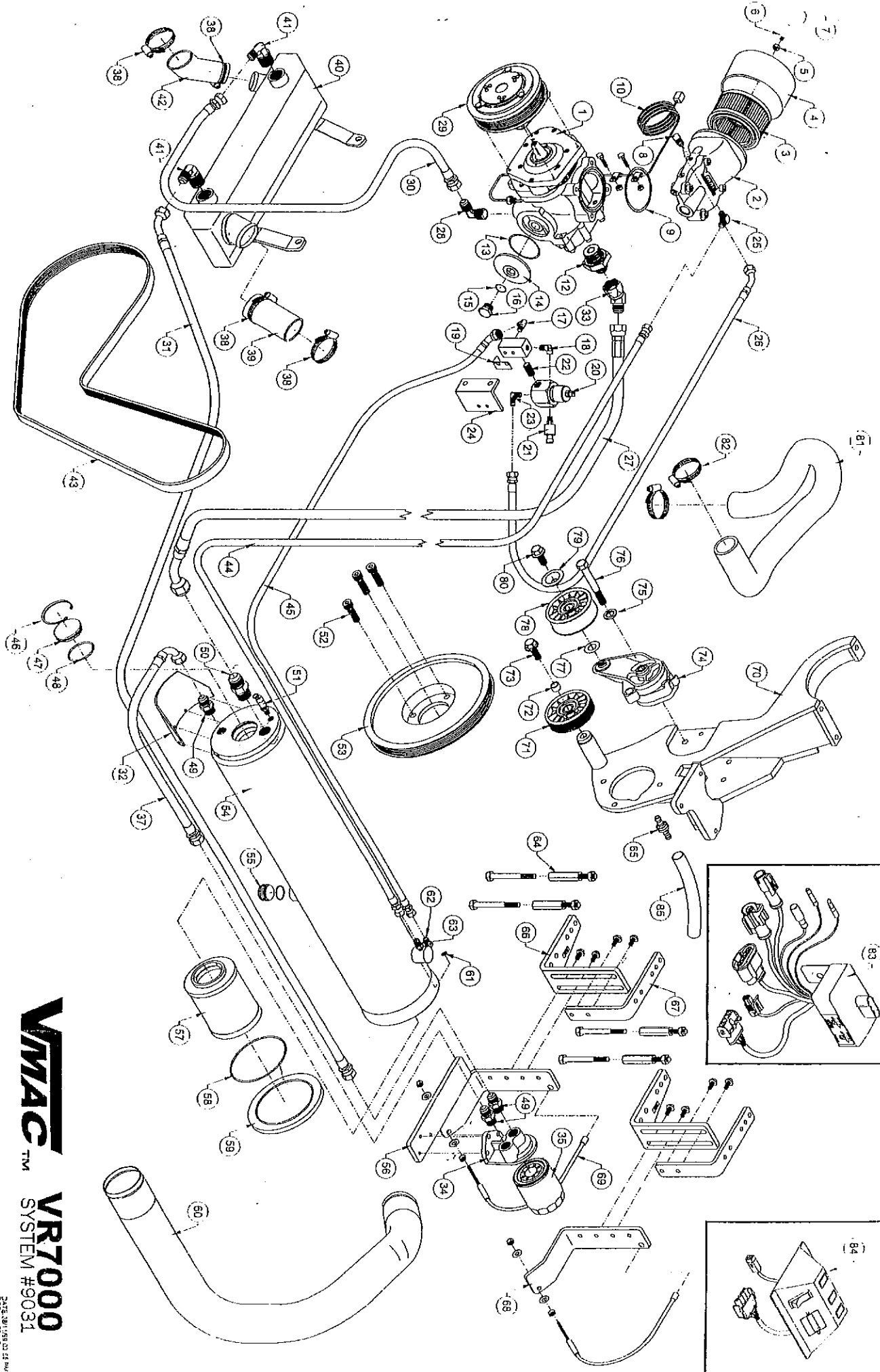


ILLUSTRATED PARTS LIST SYSTEM 9031 - 1999 FORD SUPER DUTY F250 - F550
 7.3 POWER STROKE DIESEL W/WOAC

ITEM	UNIT	QTY	PART#	DESCRIPTION
1	ea	1	1222	Rotary screw compressor
2	ea	1	92136	Inlet control valve
3	ea	1	36037	Paper filter element
4	ea	1	36045	Filter blank plate (air)
5	ea	1	15221	¼ NC nut
6	ea	1	15374	¼ NC x 3" threaded rod
7	ea	1	15029	¼ NC Nylock nut
8	ea	1	50081	1/8 NPT x 5/16 SAE 90° elbow
9	ea	1	58004	Viton o-ring 3 1/8 ID x 1/8 wide
10	ea	1	35363	Temperature probe
11	ea			Removed
12	ea	1	49032	1" male BSPP to ¼ male 37° tube
13	ea	1	58002	Viton o-ring 2 3/8 ID x 3/32 wide
14	ea	1	92104	Filter blank plate (oil)
15	ea	1	58045	Viton o-ring ¾ ID x 3/32 wide
16	ea	1	92103	Filter blank plate fitting (oil)
17	ea	1	50085	½ NPT to ¼ SAE 45° elbow
18	ea	1	50055	½ NPT 90° street elbow
19	ea	1	36053	Silencing reed
20	ea	1	36046	Regulator valve
21	ea	1	35288	Pressure transducer SST 150
22	ea	1	43082	1/8 NPT CL nipple
23	ea	1	50093	¼ NPT to 5/16 tube SAE 45°, 90° elbow
24	ea	1	12188	Regulator bracket
25	ea	1	92091	1/8" scavenge orifice 90° elbow
26	ea	1	17214	5/16 HT / 38.0" c/w 45° elbow
27	ea	1	17305	¾ HT / 45" c/w 45° elbow
28	ea	1	50074	90° elbow ½ tube to ½ NPT
29	ea	1	2035	Clutch complete 6 groove
30	ea	1	17249	½ HT / 44.5"
31	ea	1	17302	½ HT / 74.5" c/w 45° elbow
32	ea	1	12202	Guard plate
33	ea	1	49036	¾ JIC swivel nut 45° elbow
34	ea	1	45088	Remote filter mount
35	ea	1	92039	Oil filter
36				Removed
37	ea	1	17306	½ HT / 12.5" c/w 45° elbow
38	ea	4	22027	Hose clamp HS-32
39	in	4.5	17159	Green stripe hose
40	ea	1	92068	Cooler assembly
41	ea	2	50071	½ SAE to ¾ NPT 90° elbow
42	ea	1	17161	Bottom rad nose
43	ea	1	16231	Drive belt

**ILLUSTRATED PARTS LIST SYSTEM 9031 - 1999 FORD SUPER DUTY F250 - F550
7.3 POWERSTROKE DIESEL W/VOAC**

ITEM	UNIT	QTY	PART#	DESCRIPTION
44	ea	1	17095	5/16 HT / 74.0"
45	ea	1	17303	¼ HT / 89.0" c/w 45° elbow
46	ea	1	15385	Retaining ring
47	ea	1	32033	Sight glass window
48	ea	1	58008	Viton o-ring 1 15/16 ID x 3/32 wide
49	ea	1	50060	½ NPT to ½ SAE brass connector
50	ea	1	49033	¼ NPT x ¼ 37° JIC, steel connector
51	ea	1	36054	200 PSI safety valve
52	ea	3	15145	10mm x 20mm SHCS pitch 1.5
53	ea	1	18107	C/S pulley
54	ea	1	3041	Tank
55	ea	1	49045	#8 ORB hex socket plug c/w O-ring
56	ea	1	12201	Tank cradle bracket, front
57	ea	1	36036	Coalescing filter element
58	ea	1	58007	Viton o-ring, 4 ½ ID x 1/8 wide
59	ea	1	32107	Discharge cap
60	ea	1	17246	Intercooler tube
61	ea	1	36055	Filter screen
62	ea	1	50064	1/8 NPT to ¼ SAE 45°, 90° elbow
63	ea	1	50082	1/8 NPT to 5/16 SAE 45°, straight
64	ea	4	15452	Coupling assembly
65	ea	1	50005	3/8 hose splicer
66	ea	2	22093	Bottom frame clamp
67	ea	2	22094	Top frame clamp
68	ea	2	22092	Tank cradle, rear
69	ea	2	22095	Cable assembly
70	ea	1	11113	Main bracket
71	ea	1	13008	Idler six rib
72	ea	1	14051	Idler bolt spacer
73	ea	1	15161	½ x 1 ¼ NC G8 FL
74	ea	1	26075	Tensioner
75	ea	1	15048	7/16 flat washer
76	ea	1	15419	12mm x 80mm HHCS G10.9
77	ea	1	14129	Idler spacer
78	ea	1	13007	Idler, back
79	ea	1	OEM	c/w item 74
80	ea	1	OEM	c/w item 74
81	ea	1	17252	Upper rad hose
82	ea	2	22027	Hose clamp HS-32
83	ea	1	5038	Throttle control
84	ea	1	35388	Control box
85	in	11	17030	3/8 push on rubber hose



VMAC™ **VR7000**
 SYSTEM #9031

SIZE 30/15/9.25 25 PW
 DATE 08/15/92